

# MOST SIGNIFICANT HAZARDS ON substation worksites

## ELECTRICITY

- Electric shock
- Induced voltage
- Electromagnetic fields
- Working close to live components
- Static electricity
- Potential differences in earthing
- Climate factors
- Work during transmission outages

## CUTS AND BRUISES

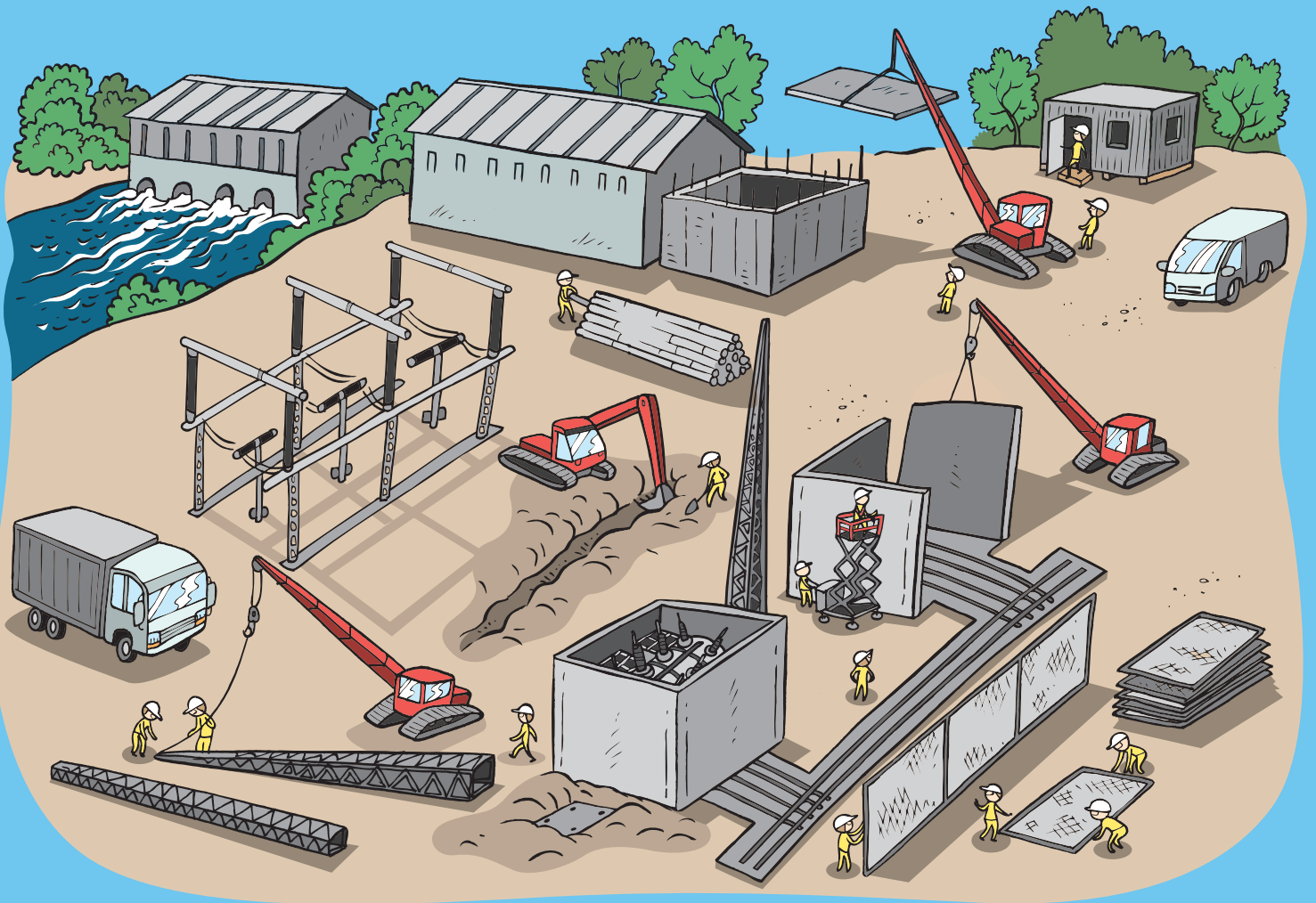
- Moving machinery and objects
- Getting entangled or crushed
- Machine breakdown
- Manual lifting and moving

## WORKING AT HEIGHT

- Falls
- Falling objects
- Personnel lifting
- Climbing and movement
- Falling onto harnesses or other fall protection equipment
- Sudden illness at height

## EXCAVATION

- Trenches collapsing
- Access routes
- Falling into a trench



## DEMOLITION WORK

- Structures collapsing
- Harmful substances
- Live cables
- Tensile stress and forces
- Inadequate documentation on old substations

## TRAFFIC

- Worksite traffic
- Commuting
- Animals on the road
- Driving long distances and weather conditions

## COMMUNICATION AND RESPONSIBILITIES

- Several operators on the worksite
- Ambiguous responsibilities
- Shortcomings in the exchange of information
- Working alone

## MOVING AROUND

- Slipping
- Tripping
- Tidiness and order

## LIFTING

- Cranes falling over
- Soil giving way
- Excessive load
- Failure of lifting equipment
- People in the danger zone
- Weather conditions

