

MOST SIGNIFICANT HAZARDS ON transmission line worksites

LIFTING

- Cranes falling over
- Soil giving way
- Excessive load
- Failure of lifting equipment
- People in the danger zone
- Weather conditions

CUTS AND BRUISES

- Moving machinery and objects
- Getting entangled or crushed
- Machine breakdown
- Manual lifting and moving

WORKING IN ROAD AND RAILWAY AREAS

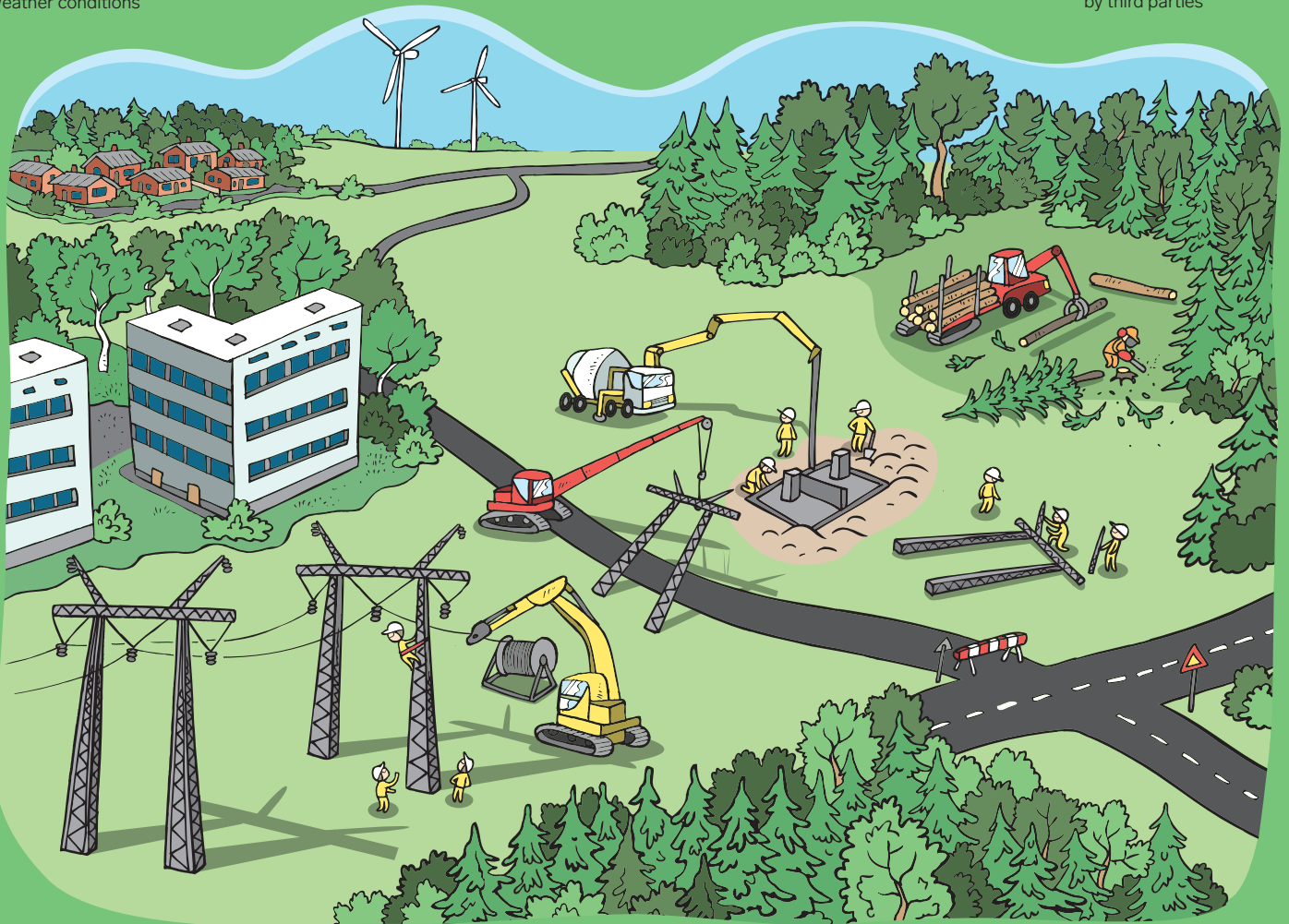
- Car and train traffic
- Endangering third parties
- Storing, loading and unloading materials

WORKING AT HEIGHT

- Falls
- Falling objects
- Personnel lifting
- Climbing and movement
- Falling onto harnesses or other fall protection equipment
- Old structures
- Sudden illness at height

THIRD PARTIES ON THE WORKSITE

- Endangering third parties
- Hazards caused by third parties



ELECTRICITY

- Electric shock
- Induced voltage
- Electromagnetic fields
- Working close to live components
- Static electricity
- Potential differences in earthing
- Climate factors
- Parallel and intersecting energised lines
- Work during transmission outages

COMMUNICATION AND RESPONSIBILITIES

- Several operators on the worksite
- Ambiguous responsibilities
- Shortcomings in the exchange of information
- Working alone
- Worksites covering a large area and long distances

TRAFFIC

- Worksite traffic
- Commuting
- Animals on the road
- Driving long distances and weather conditions

EXCAVATION

- Trenches collapsing
- Access routes
- Falling into a trench

DEMOLITION WORK

- Structures collapsing
- Harmful substances
- Live cables
- Tensile stress and forces
- Condition of structures and initial information

MOVING AROUND

- Slipping
- Tripping
- Bearing capacity and unevenness of soil

